



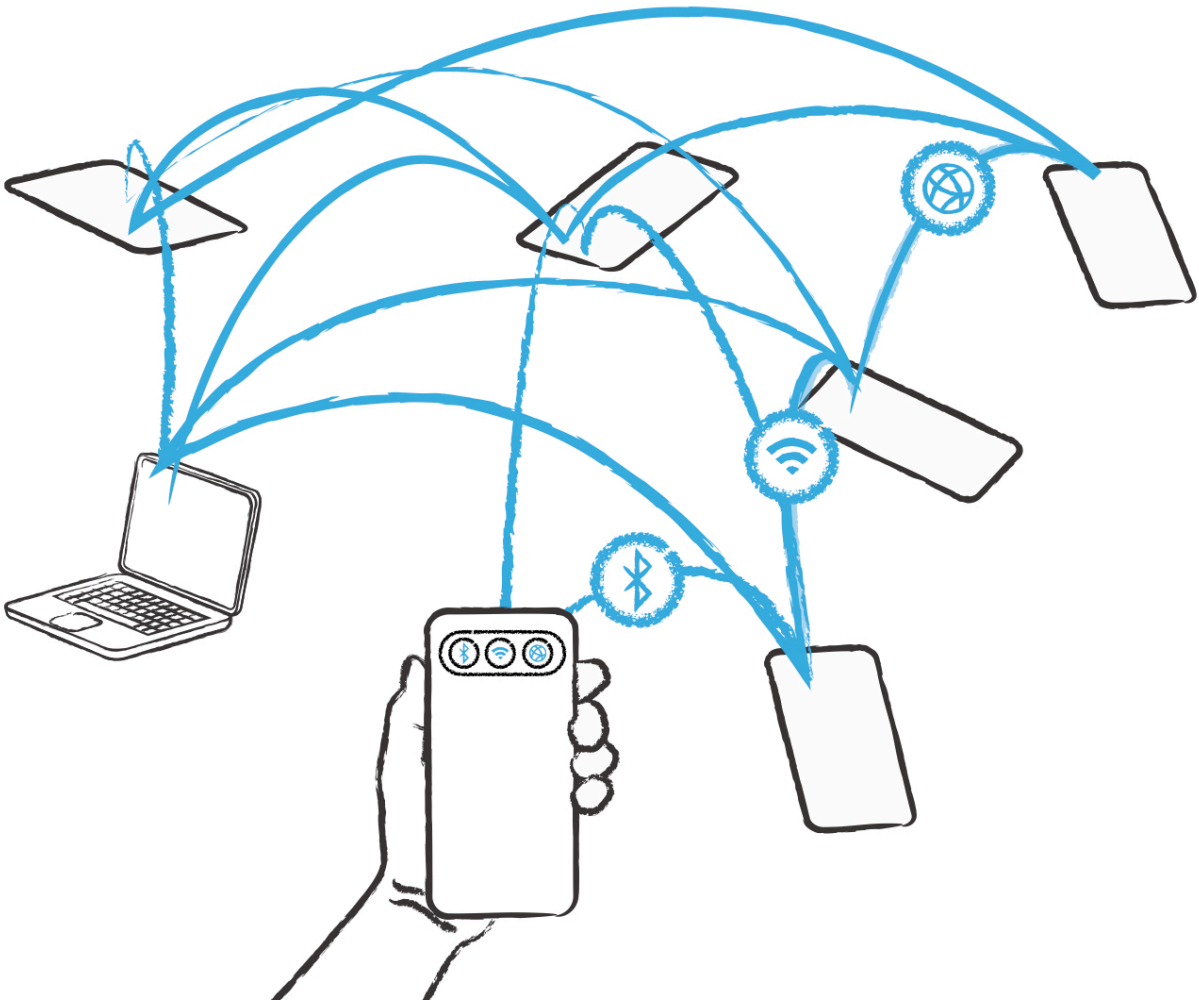
qaul is the first Internet Independent Wireless Mesh Communication App used and developed since 2011 by a community in many countries such as Iran, Sudan, China, Syria, Egypt, Lebanon.

It is ready to use and download:

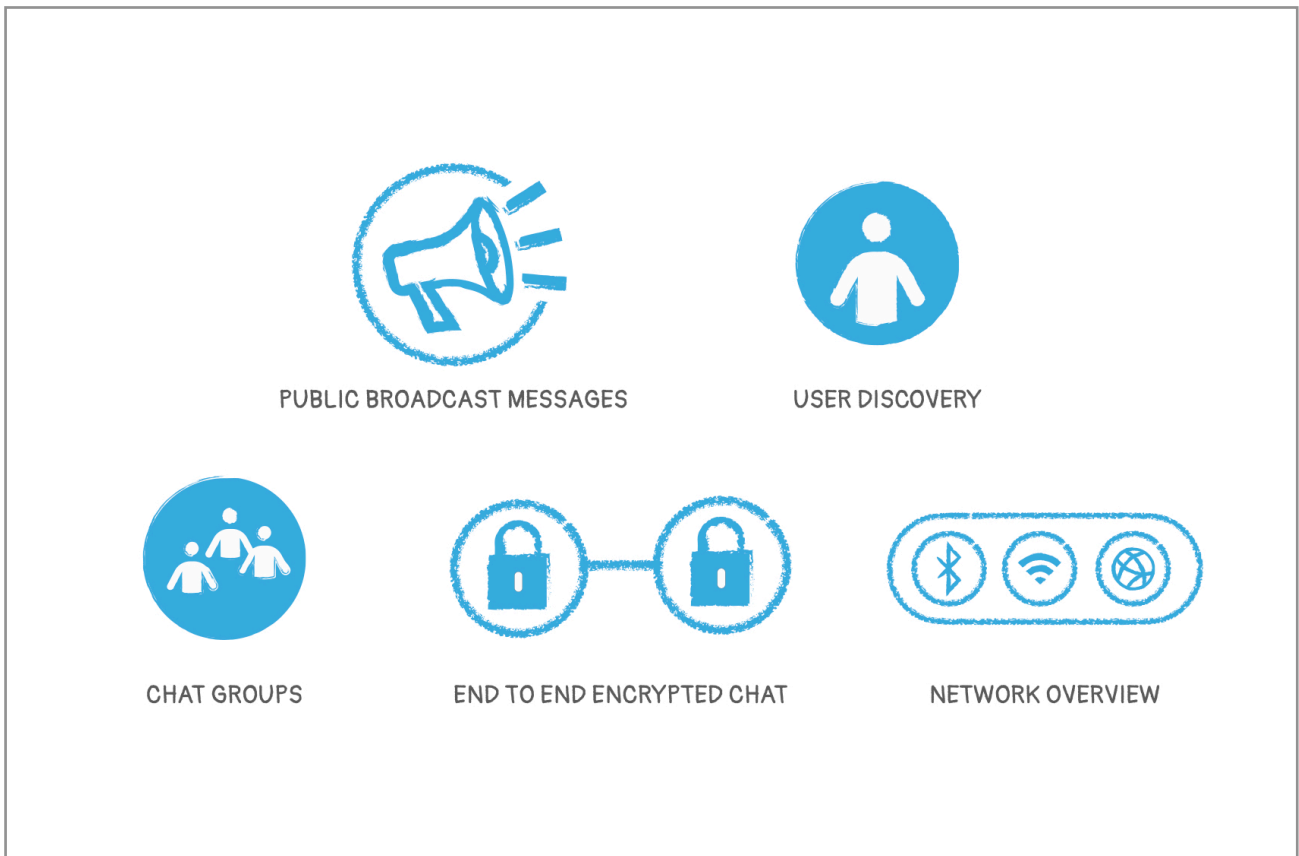
<https://qaul.net/#download>

qaul Repository: <https://github.com/qaul/qaul.net>

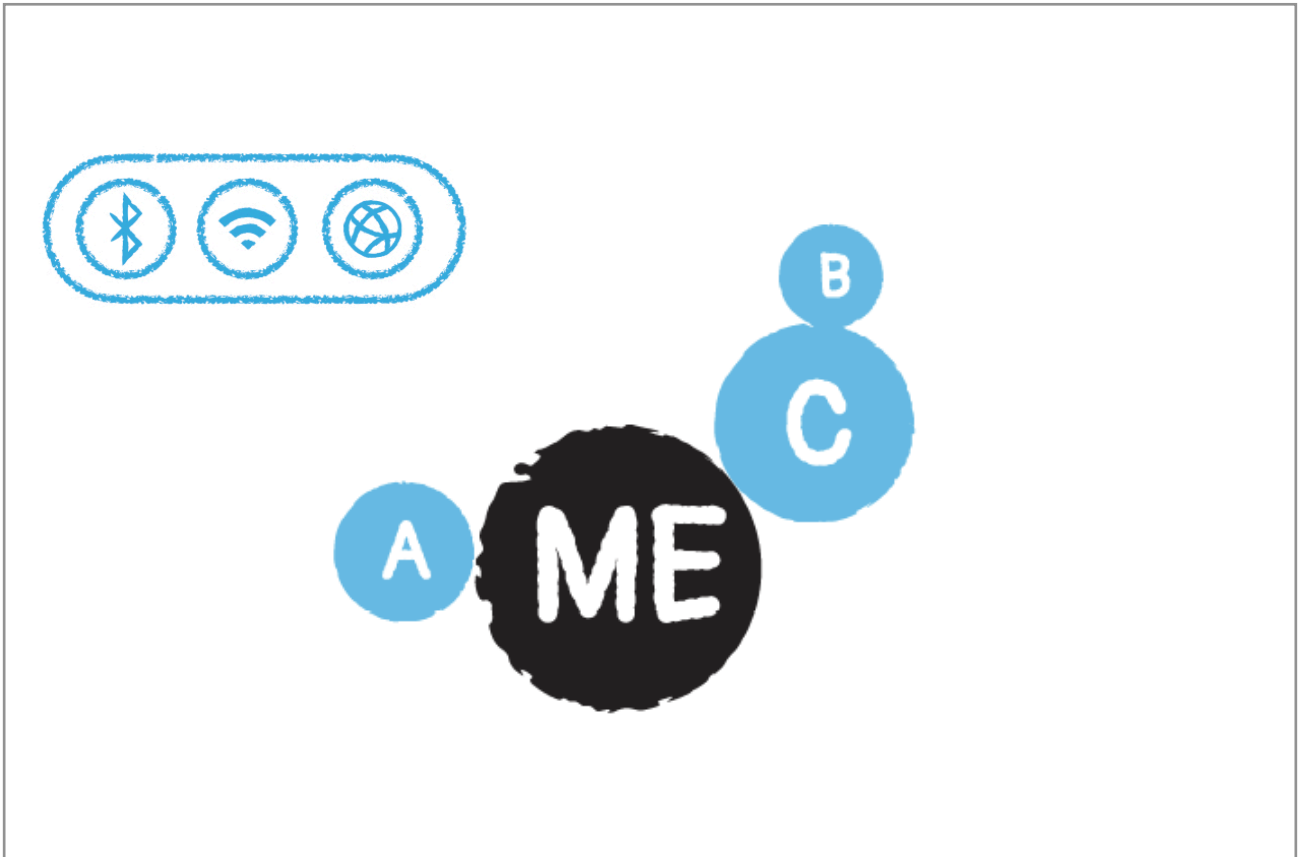
Website: qaul.net



qaul provides a solution for a **secure local off-the-grid peer-to-peer communication**. Devices can interconnect and communicate via **Bluetooth, Wifi, LAN and via Internet overlay**. All interconnected devices are meshed together.



qaul allows to participate and to **communicate independently and directly** with everyone in the network. There are features such as **end-to-end encrypted messaging, public broadcast, chat groups** etc. The App can automatically detect other qaul users nearby, **broadcast public messages** to everyone, and allows to create **chat groups** and send **end to end encrypted chat messages, images & files**.



Specially with the **Network Overview** every user get an impression how this multi layered network is unfolding and how everyone can directly participate and improve this network.

qaul is a **peer to peer communication method** to communicate internet independently and completely off-the-grid. The App allows to communicate directly from device to device via local wifi network, or via the shared wifi network of each phone. It is open to mesh local clouds together via manually added static nodes.



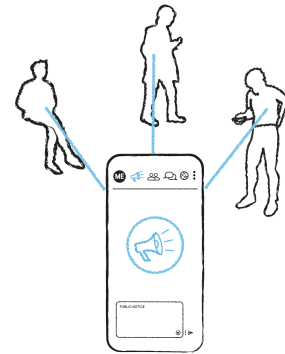
1) qaul can be downloaded from App Stores, or shared of the grid. After installation, you can start using it right away.

The user interface is available in many languages. Every writing system is supported. Missing languages can be added easily.

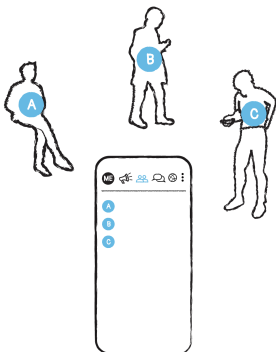


2) To create a user profile you only need to choose a user name. Any name, numbers and even emoticons are possible.

A cryptographic identity is automatically created for your user. This cryptographic identity is used to identify your user in the network.

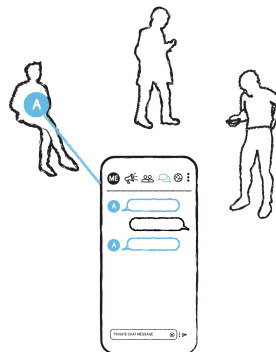


3) On the public channel, you can post messages, visible for everyone in the network. These messages are verified regarding to the sender, but as public announcements they are not public and not encrypted.

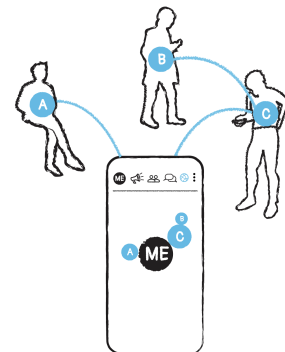


4) Interconnected users are automatically discovered and added to the contact list.

Users can be manually verified. Unwanted contacts can be blocked.



5) All chat messages and group chats are always end-to-end encrypted.



6) All devices in the same LAN or within Bluetooth range are interconnected automatically. All interconnected devices are meshed together to one big qaul-network.

qaul allows to see the Internet Independent Wireless Mesh Network. One can see how one is connected with other users.

qaul made **secure off-the-grid communication** easy to use. qaul highlights the structure of the network for everyone participating. Users are discovered automatically. The routing protocol is able to interconnect nodes, in a fully-meshed, multi-connectivity overlay-network.